



Intelligent Manufacturing Changes Future



Intelligent Manufacturing Changes Future

**As a global enterprise, HSG sticks to providing professional and convenient service support to customers at home and board**

- Professional Training**  
Multiple technical training service and free operation training for customers and dealers in time
- Efficient Support**  
Humanistic service model, online services and 7\*24 hotline to offer solutions and assistance
- Optimized Transport**  
Multi-channel transport solutions and professional transport solution team will provide various transport cases for to satisfy the demand of customers and save transports fees
- Sufficient Accessories**  
Highly efficient accessories delivery service, multiple network inventory jointly responds to accessories demand to shorten customer's waiting times and accelerate production
- Careful Services**  
Domestic door-to-door service and free proofing, global 100+dealers provide efficient and convenient services

Plasma Systems Inc.  
11601 North Houston Rosslyn Rd Houston, Texas 77086  
Website: [www.plasmasystemsinc.com](http://www.plasmasystemsinc.com)  
Email: [Sales@plasmasystemsinc.com](mailto:Sales@plasmasystemsinc.com) Tel: (832) 243-9900



Cutting | Bending | Welding | Automation



**GX**

Double Exchange Platforms Laser Cutting Machine

[www.plasmasystemsinc.com](http://www.plasmasystemsinc.com)

**Company Culture**

- MISSION**  
Intelligent manufacturing changes future
- VALUES**  
Customer-focused and employee-based
- VISION**  
Become a respectable enterprise in the global metal forming equipment field

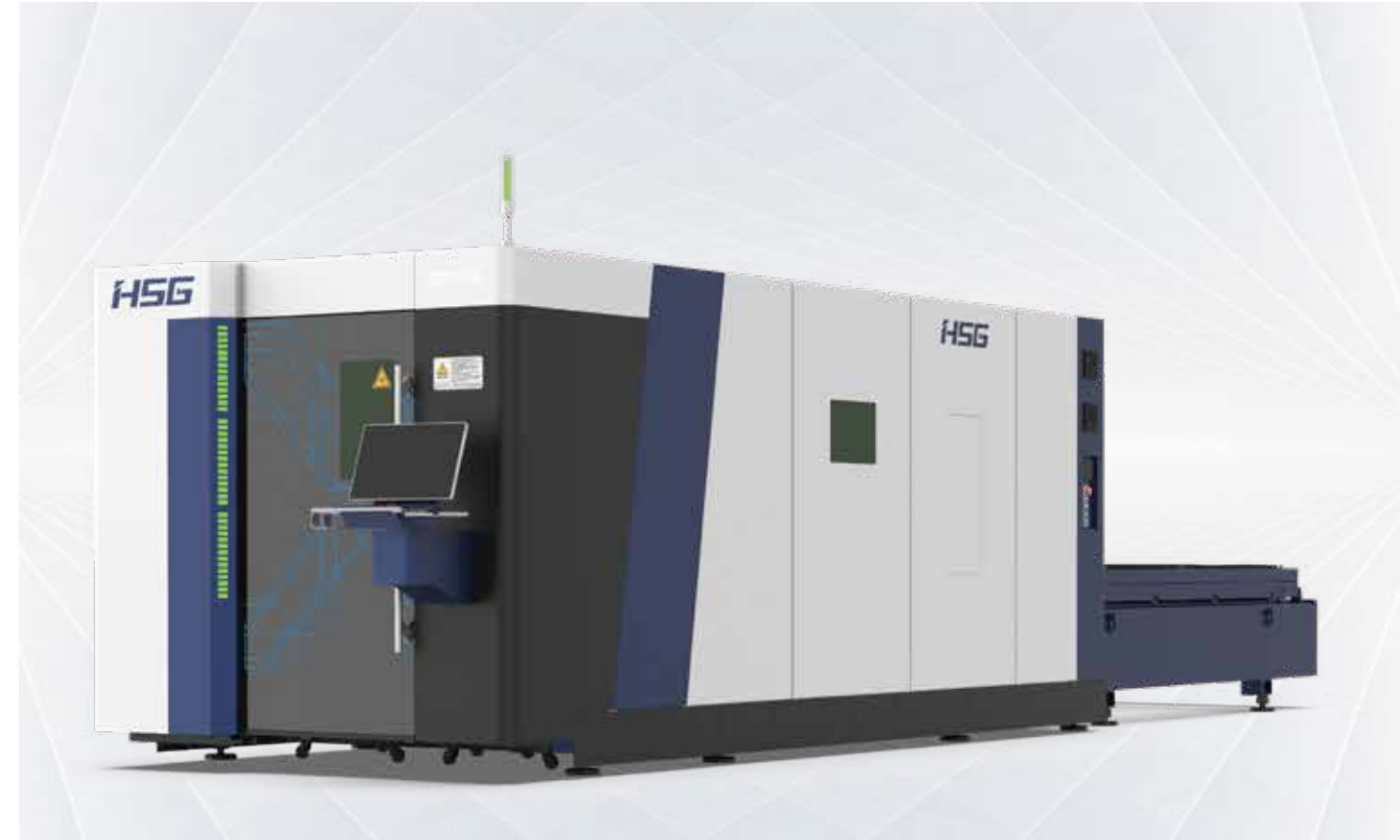
**Company Profile**

 <b>13</b> Global Branches	 <b>100+</b> Countries Covered	 <b>4</b> Manufacturing Bases	 <b>30+</b> Global Service Outlets
 <b>8,000+</b> Delivery Capability	 <b>96,000m<sup>2</sup></b> Occupied Area		



# GX 3000-6000W

## Double Exchange Platforms Laser Cutting Machine



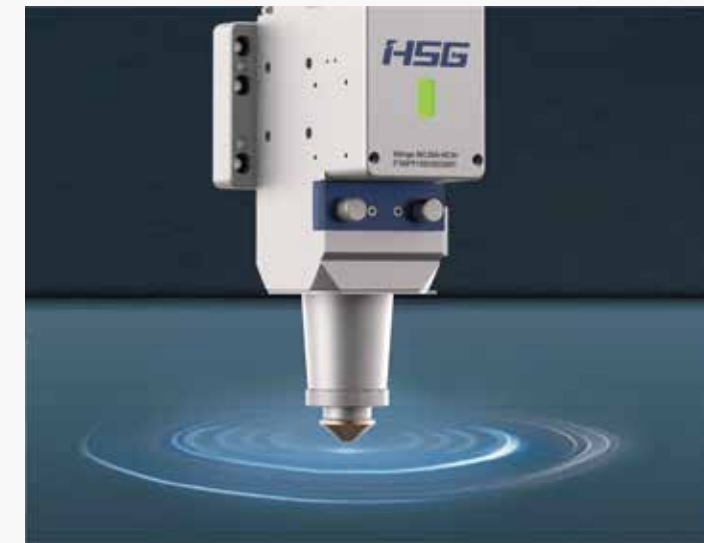
### Technical Parameters

Technical Parameters	G3015X
Power	3000W-6000W
Processing format (L*W)	3048mm*1524mm
X/Y-axis positioning accuracy	±0.03mm/m
X/Y-axis repositioning accuracy	±0.03mm
No-load speed	140m/min
Acceleration	1.5G
Safety Certification	TUV CE

\* Machine appearance, technical parameters, function description, data comparison shown in this page are from HSG in-house laboratory. All testing results and experimental data shall be subject to real machine.

### HSG Bus-based Control System

- EtherCAT bus high-speed response with strong anti-interference capability and simple electrical maintenance.
- Support absolute value and continue in outage and at the break-point for convenient remote diagnosis and servo adjustment.
- Automatic management of machine maintenance, core components are monitored in real time for easy and maintenance reminded on a regular basis.



### Follow-up Response Technology

- High sensitivity detection of striker plate.
- High speed follow of vibrating sheet.
- Automatic obstacle avoidance.



### Professional Nesting Software with Standard Configuration

- High nesting utilization ratio as famous nesting software.
- Simple operation with drawing function and support manual and automatic nesting.
- Support different materials and thicknesses categorized typesetting.
- Excel batch import.

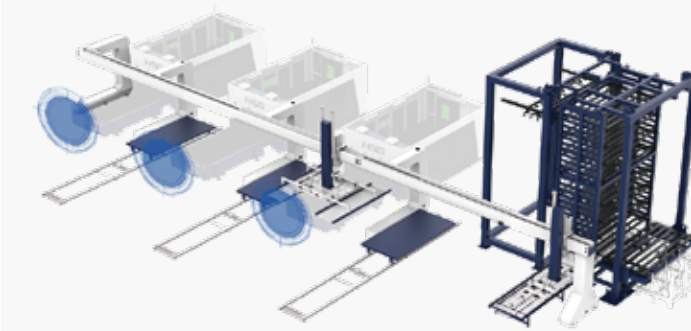
### Support Graphics and G Code Software

- By code conversion software, Alpha T can support other brand equipment for super high compatibility.



### Fully Functional Processing Technology

- High-speed microjoining, nano microjoining, counterbore technology and non-inductive perforation.
- Manual, automatic tracing-edge and anti-collision beam.
- Leftover bits and pieces cutting, coaxial visual sensing and automatic replacing nozzle.
- Common side cutting to reduce leftover bits and pieces and save energy.

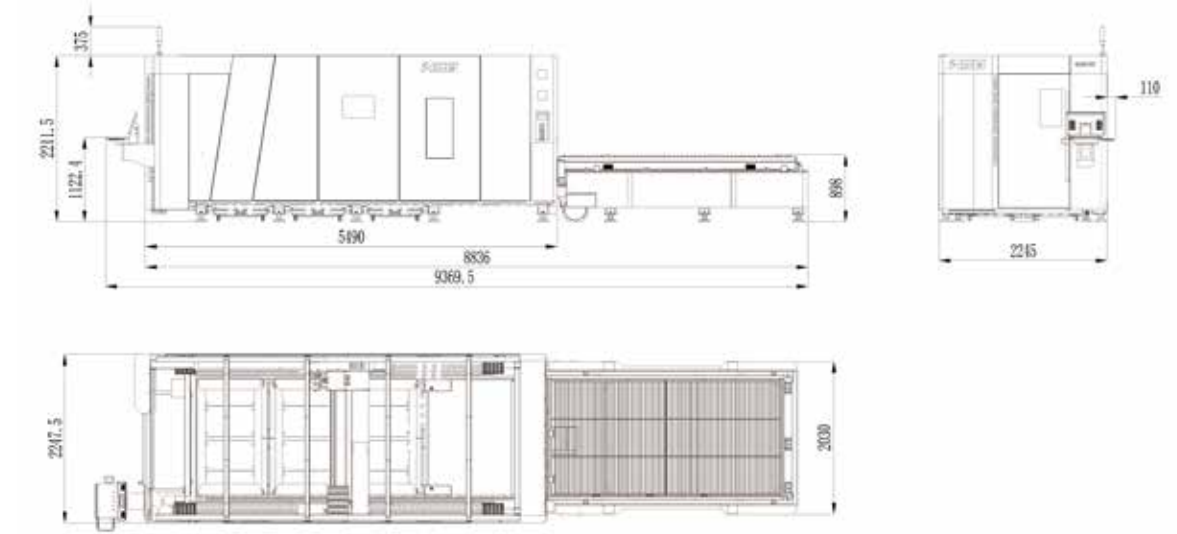


### Smart Factory and Standard Central Control System Interface Intelligent management

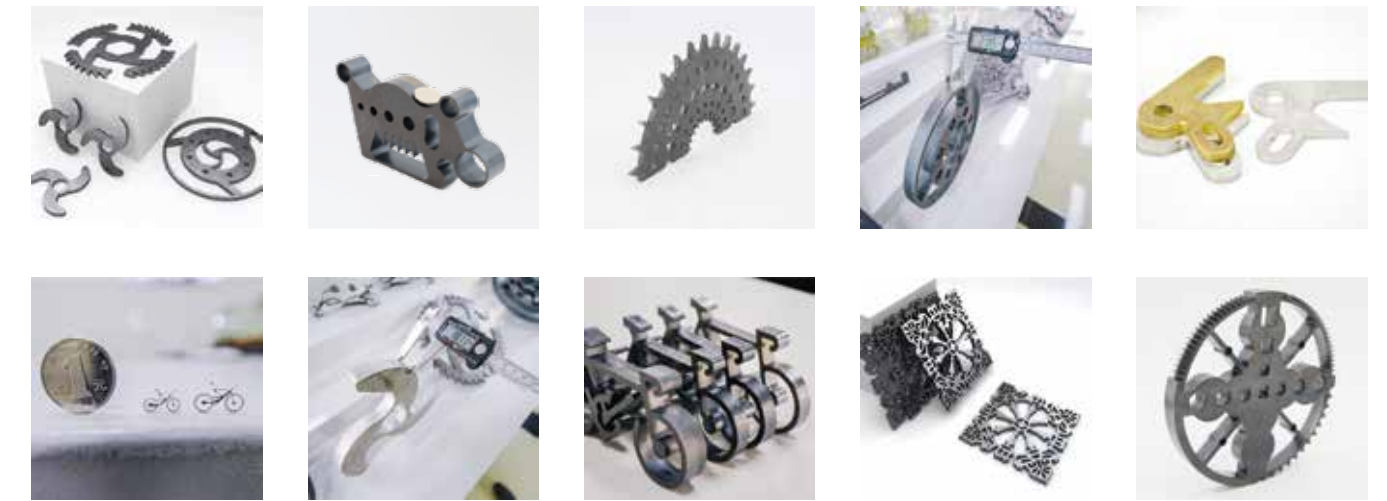
- Integrate with material tower and automatic loading and unloading equipment to create automatic production lines.
- Intelligent system to form production report by one click.

### Machine Foundation

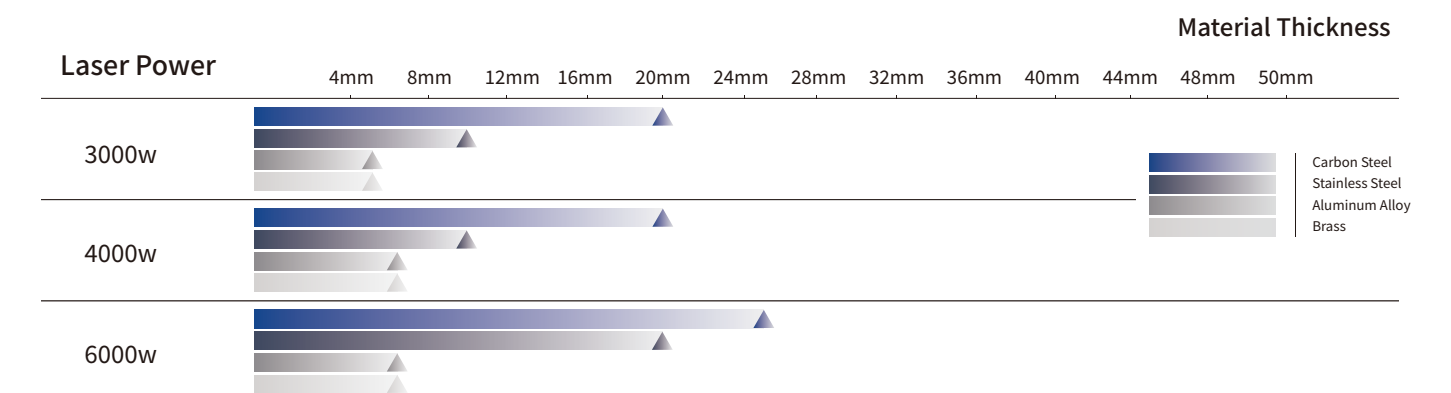
\*The marked size has about 10mm error



### Cutting Samples



### Cutting Capacity



The actual machines shall prevail and above data & pictures are only for reference.