

# Precision CNC Control InSight Controller

Plasma Systems InSight Controller operates the system with open architecture in Windows 10 IoT

- Integrate communications to the plasma, THC drive, and controller
- Measuring laser to automatic skewing of the plate, digitizing remnants, and find the plate for initial pierce heights
- Patent Hypertherm **True Hole Technology**
- Collect track of actual usage on a daily, weekly and monthly basis
- The main screen alerts operator to how long it will take to cut the part or nest

Plasma Systems InSight Controller embeds with Steel Solution Nesting Software

## The Interactive Nest View



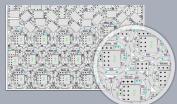
The nest view gives you ultimate control by allowing you to manually complete cut paths or entire parts by checking them off of the part list.

## The Part Development



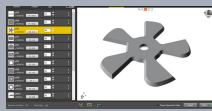
Easily check dimensions or make edits to parts using the re-designed CAD/CAM graphical part editor.

## The Advanced Nesting Feature



The Software features advanced nesting options such as true-shape plate nesting, chain-cutting, common-line cutting and remnant management.

## The 3D Graphical Interface



Create new parts from scratch or import existing ones from multiple file formats including dxf, dstv, and svg.

This allows you to view parts in 2D and 3D to view further details and help ensure proper part accuracy.

## Technical Support

In effort to constantly improve our product, software updates are issued throughout the year. Many of improvements come from customer feedback which we encourage.

- Internet-based remote help for diagnostics
- Field service and maintenance within 48 hours response
- Extensive line of **Hypertherm** consumables



**"INDUSTRIAL AUTOMATION IS MORE INTELLIGENT  
WHEN PAIRED WITH PRECISON PLASMA"  
- RICHARD KEETON, PRESIDENT**

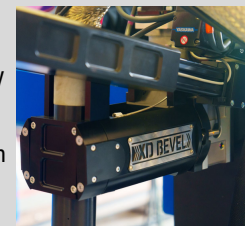
**DESIGNED TO BE MORE PRECISE,  
EASIER TO USE, MORE PRODUCTIVE**

- Constructed of Steel with a coat of industrial coating
- Precision Planetary Gearboxes with one to three arc mins of backlash
- Laser Measuring Systems for initial height sensing and plate alignment
- Built-in High Definition Camera to monitor positioning in real time



## 5-Axis Torch Beveling

Cut beveled parts with speed and precision using our industrial-quality torch beveling system. Originally engineered for 3D structural cutting, this unique design can handle the complex of plate beveling needs.



**Robust Bevel Lifter** designed for the high-speed and precise movements that are required for beveling applications, our robust bevel lifter takes height control to another level. This lifter is built to handle the tough demands of production bevel cutting.



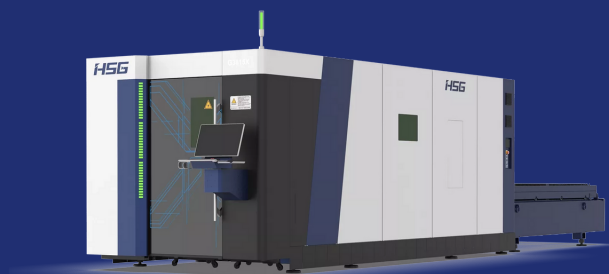
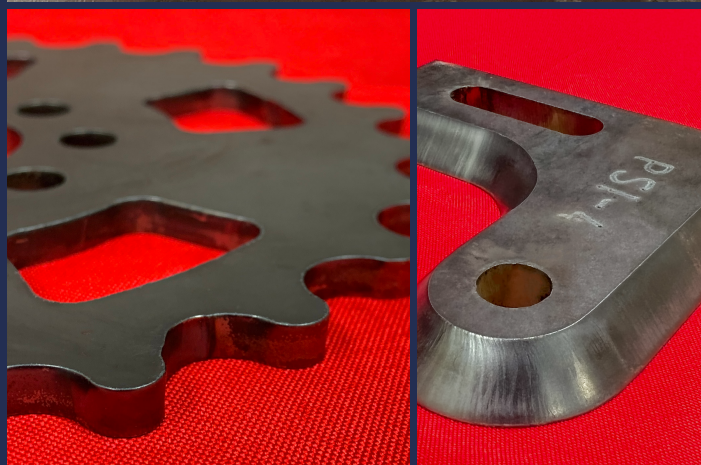
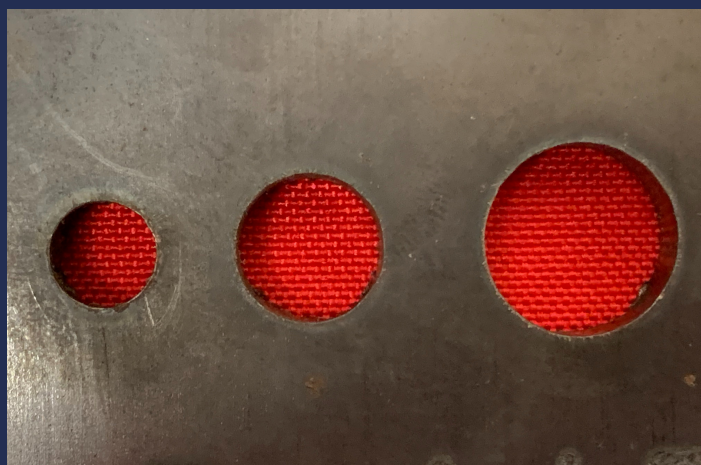
## Dot Peen Marking Head

is fast and economic, permanent marking solution with only one consumable, consisting of a carbide stylus, the dot peen system will mark on most materials, from plastic to hardened steel.



**Oxy-Fuel bevel system** will make short work of these seemingly daunting tasks, saving time and money if you are cutting thicker material requiring complex bevel cuts.





THE MASTER DISTRIBUTOR FOR

**HSG**

IN TEXAS AND  
THE SOUTHERN REGION



PRECISION CUTTING EDGE DESIGN

## OUR MISSION

"Our mission is very simple but somewhat rare in today's global market place. Design and manufacture the best possible American made product for our customers."

- Richard Keeton

### FIBER LASER CUTTING MACHINES:

- SHEET METAL LASER CUTTING
- TUBE METAL LASER CUTTING
- SHEET & TUBE CUTTING
- BENDING MACHINES

EU CERTIFICATION | ISO CERTIFICATION

PHONE: 832 243 9900

FAX: 832 243 9901

11601 N HOUSTON ROSSLYN RD  
HOUSTON, TEXAS 77086

[WWW.PLASMASYSTEMSINC.COM](http://WWW.PLASMASYSTEMSINC.COM)